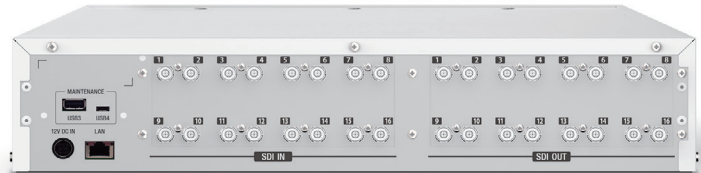
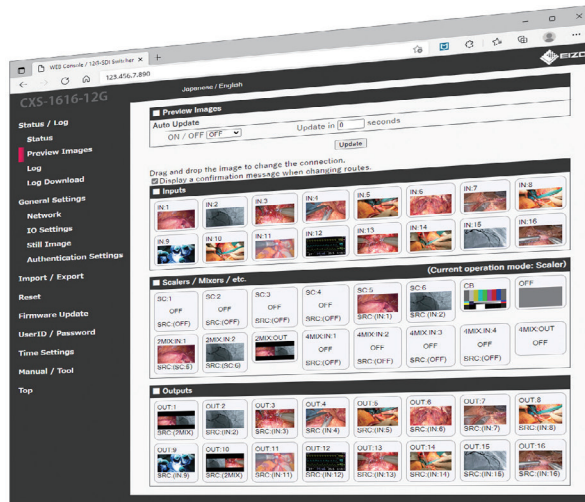




EIZO®

CuratOR® CXS-1616-12G

12G-SDI Switcher



16 x 16 SDI Video Switcher with 4K to Full HD Downscaling

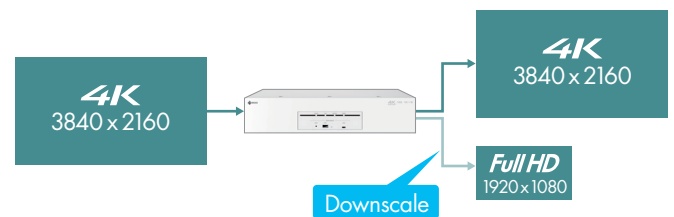
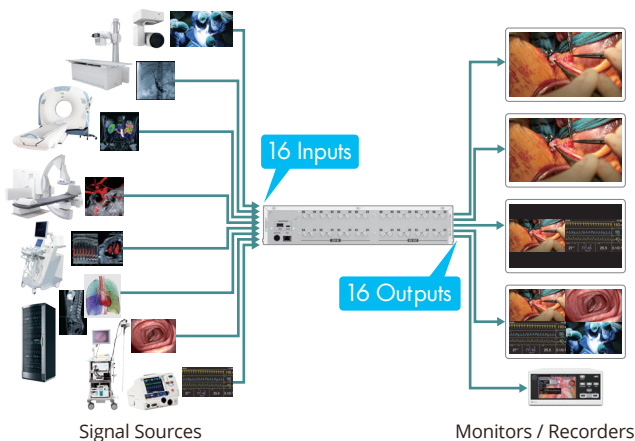
SDI Video Signal Centralized Switching

With 16 inputs and 16 outputs (12G-SDI, 6G-SDI, 3G-SDI, HD-SDI, and SD-SDI), the CXS-1616-12G consolidates multiple video signals from various devices in the operating room, such as cameras or endoscopes. This allows for centralized control and efficient switching of video signals, ensuring they are transmitted to the necessary destinations, such as monitors or recorders.

Built-in Downscaling

The downscaling function enables 4K (3840 x 2160 pixels) resolution input signals to be output in Full HD (1920 x 1080) resolution, eliminating the need for an external converter. It also supports downscaling from DCI 4K (4096 x 2160 pixels)*.

* Image is sidecut to 3840 x 2160 and then downscaled to 1920 x 1080.



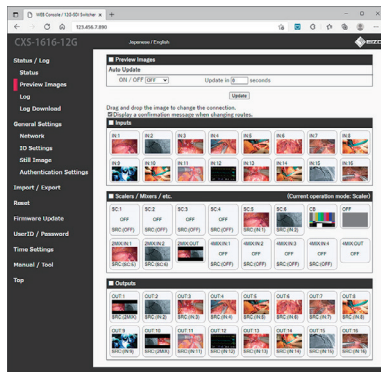
CuratOR[®] CXS-1616-12G

Instantaneous Image Viewing

Images are transmitted with no perceptible delay, offering a seamless hand-eye coordination experience for the attending specialist. Even when using a scaler, delay is less than 0.01 frames (less than 0.08 ms).

Intuitive Operation with Web Console

Switching and distribution control, settings, and firmware updates of the switcher can be managed from a network-connected PC using a web-based application. Thumbnail images generated from the input video enhance visibility and usability of input/output settings and facilitate connection checks.



Input/Output Preview Window

Enhance Operational Convenience with Caliop

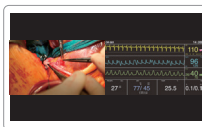
CuratOR Caliop, EIZO's software for centralized control of image and video systems in operating rooms, streamlines the operation of the switcher and other systems in the operating room.

Manual Switching via USB Keyboard

A USB keyboard or numeric keypad can be connected to the USB port, providing a manual switching option as an alternative to using the web console.

Simplified Multi-Signal Output

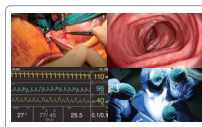
Two or four different input signals can be selected and output for simultaneous side-by-side display on a monitor or recorder using the PbyP (Picture-by-Picture), PinP (Picture-in-Picture), or 4MIX function. This eliminates the need to connect additional signal cables to monitors or recorders.



PbyP



PinP



4MIX

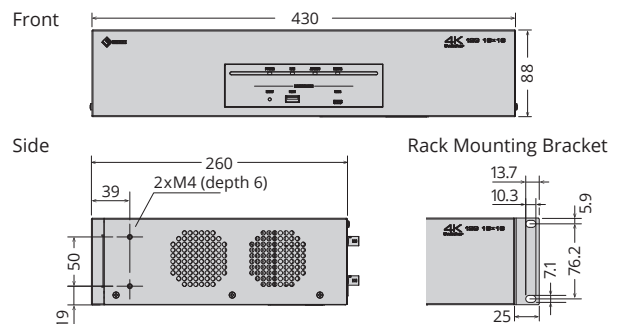
Mounting Flexibility

The switcher is designed for flexible installation in the operating room, supporting 19-inch 2U rack mounting with the included bracket, or flat placement on a cart using the provided rubber feet.

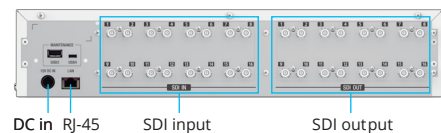
Specifications

Input Terminal	12G-SDI, 6G-SDI, 3G-SDI, HD-SDI, SD-SDI	75Ω BNC x 16
Output Terminal	12G-SDI, 6G-SDI, 3G-SDI, HD-SDI, SD-SDI	75Ω BNC x 16 <i>Valid only when the main power is on.</i>
Network Interface	Standard Terminal	100Base-TX, 1000Base-T
USB (for maintenance)		Front: USB Type-A, Micro-USB (Micro-B) Rear: USB Type-A, Micro-USB (Micro-B)
Input Signal	Supported Signal	4096 x 2160/50p/59.94p/60p, 3840 x 2160/50p/59.94p/60p, 3840 x 2160/25p/29.97p/30p, 1920 x 1080/50p/59.94p/60p, 1920 x 1080/50i/59.94i/60i, 1920 x 1080/25p/29.97p/30p, 1280 x 720/50p/59.94p, 720 x 480/59.94i, 720 x 576/50i
	Format	12G-SDI, 6G-SDI (SMPTE ST2082/ST2081) 3G-SDI Level-A/B (SMPTE ST424, ST425) HD-SDI (SMPTE ST292) SD-SDI (SMPTE ST259-C)
Output Signal	Supported Signal	4096 x 2160/50p/59.94p/60p, 3840 x 2160/50p/59.94p/60p, 3840 x 2160/25p/29.97p/30p, 1920 x 1080/50p/59.94p/60p, 1920 x 1080/50i/59.94i/60i, 1920 x 1080/25p/29.97p/30p, 1280 x 720/50p/59.94p, 720 x 480/59.94i, 720 x 576/50i
	Format	12G-SDI, 6G-SDI (SMPTE ST2082/ST2081) 3G-SDI Level-A/B (SMPTE ST424, ST425) HD-SDI (SMPTE ST292) SD-SDI (SMPTE ST259-C)
Scaling		Input signal: 3840 x 2160/59.94p/60p, 4096 x 2160/59.94p/60p Output signal: 1920 x 1080/59.94p/60p Number of channels: 6ch <i>4096 x 2160 is sidecut to 3840 x 2160 and then downscale to 1920 x 1080. Frame rate is fixed at 59.94p or 60p for both input and output, every 2 channels. Embedded audio cannot be used when using a scaler.</i>
Frame Delay		Without scaling: 0 frame With scaling: less than 0.01 frame
Power Requirements		AC adapter: AC 100 - 240 V, 50 / 60 Hz DC input: DC12V
Maximum Power Consumption		60 W
Net Weight		5.1 kg
Operating Temperature		5 - 40°C
Operating Humidity (R.H., non condensing)		20 - 90%
Certifications & Standards		CB(IEC62368-1), CE, UKCA, RoHS, China RoHS, WEEE, IEC60601-1 <small>(Please contact EIZO for the latest information.)</small>
Supplied Accessories		AC power cord, AC adapter, user's manual, rack mounting bracket x 2, rack mounting screw x 4, rubber foot x 8 <small>(May vary by country. Please contact EIZO for details.)</small>
Warranty		2 Years

Dimensions (Unit: mm)



Connectors



You will find your EIZO contact partner at: <https://eizo-or.com/contact>

The CXS-1616-12G is not classified as a medical device.

EIZO, the EIZO Logo, and CuratOR are registered trademarks of EIZO Corporation in Japan and other countries. All other company names, product names, and logos are trademarks or registered trademarks of their respective owners. Specifications are subject to change without notice. Screenshot of Microsoft product is used with permission from Microsoft Corporation.